



**DELTAPLUS**

YOUR SAFETY AT WORK



**SAFETY EYEWEAR**



**OIL&GAS**



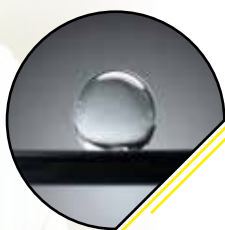
**PAINTING**



**AUTOMOTIVE&MAINTENANCE**



**EN166** 1 FT/FT  
**EN170** UV 2C-1.2  
**ANSI Z87.1** Z87+



**Oleophobic  
Hydrophobic  
Coating**

By **DELTA PLUS**



Highly oleophobic & hydrophobic  
contact angle remains higher than 105°



Higher resistance to abrasion  
20% > regular test



Ultra-limited haze effect  
less than 0.11% haze increase after abrasion

You think you cannot keep your safety spectacles clean and clear while working in extreme conditions ?

Try the new innovative coating for safety eyewear:  
**DELTA PLUS LYVIZ™**

Making sure workers see their task clearly to ensure their SAFETY at WORK.

**OTHER MODELES OF PACAYA**

**PACAYA CLEAR**



**PACAYA SMOKE**



**PACAYA T5**



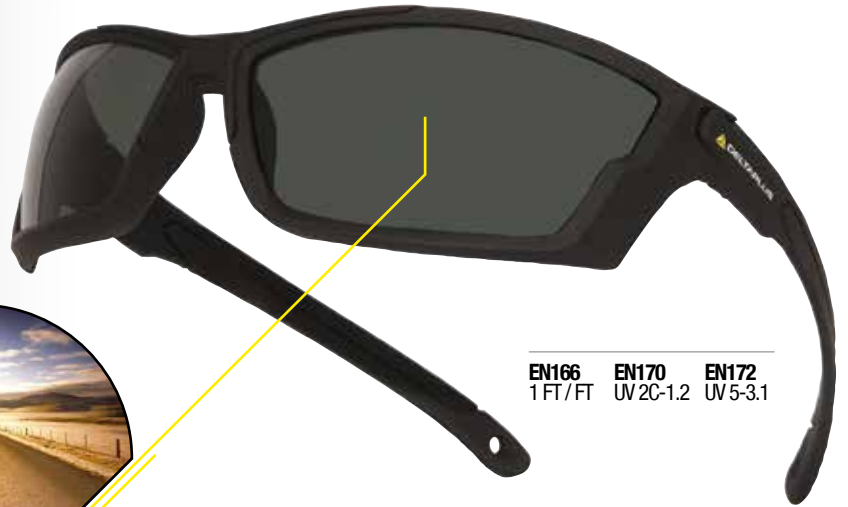
**PACAYA CLEAR STRAP**



**NEW**



# KILAUEA POLARISED



EN166 1 FT/FT    EN170 UV 2C-1.2    EN172 UV 5-3.1



Without polarized lenses

With polarized lenses

- Reduce glare
- Increase the contrast
- Vary the light intensity

- Increase the sensation of depth (3D)
- Reduction of eyestrain
- Improve the neatness of forms and colors

## VULCANO2 PLUS CLEAR



EN166 1 FTKN/FT    EN170 UV 2C-1.2

### **K** Anti-scratch treatment

The anti-scratch treatment acts as a hardener shield that enhances the resistance of lens and limits the formation of stripes. It extends the life of the glass and improves the comfort of its users, preventing any scratches can impede vision.

### **N** Anti-mist

The anti-mist treatment let work in optimal conditions by removing the condensation effect that occurs when significant temperature differences or by wearing non-aerated frame.

# SAFETY EYEWEAR

## Glasses



74,4%\*

EN170

### ASO CLEAR



### FUJII2 CLEAR



### KILAUEA CLEAR



### PACAYA LYVIZ™



### PACAYA CLEAR STRAP



### SALINA CLEAR



### THUNDER CLEAR



### PACAYA CLEAR



### HEKLA



### KISKA CLEAR



### LIPARI2 CLEAR



### VULCANO2 PLUS CLEAR



### VULCANO2 CLEAR



### TAMBORA CLEAR



### FUEGO



### EGON CLEAR



### EGON YELLOW



74,4%\*

EN166 1 FT EN170 EV 2C-1.2 EN172 UV 5-3,1 EN352-2 UV 2C-1.2 SNR 21 dB H 22 M 22 L 17

8%\*



### BB COM - OSTEOPHONIC GLASSES



\* Minimal transmission factor of visible light

INDOOR/OUTDOOR **43,2%\***

**EN172**

**8%\*** OUTDOOR

**BLOW GRADIENT**



**FUJI2 GRADIENT**



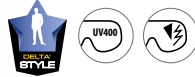
**KILAUEA POLARISED**



**EGON LIGHT MIRROR**



**KILAUEA MIRROR**



**NEW**

**BLOW SMOKE**



**ASO SMOKE**



**NEW**

**SALINA SMOKE**



**NEW**

**THUNDER BRONZE**



**EGON SMOKE**



**KISKA SMOKE**



Non reflecting



**NEW**

**PACAYA SMOKE**



**TAMBORA SMOKE**



**VULCANO2 SMOKE**



**PITON CLEAR**



**PITON2 CLEAR**



**BRAVA2**



**KILIMANDJARO**



**MEIA**



**MILO**



**NEW**

ESSENTIAL

# SAFETY EYEWEAR

## Goggles

SABA



EN166  
1 BT 9/3 4 9 BT

TACANA SPORT



EN166  
1 BT / 3 4 BT

GALERAS



EN166  
1 BT / 3 4 BT

GALERAS SMOKE



EN166 EN172  
1 BT / 3 4 BT UV 5-3.1

NEW

FILM GOGGLE



RUIZ1 ACETATE

MURIA1



EN166  
1 B/B

RUIZ1



EN166  
1 B/3 B



EN166  
1 FT / 3 FT



# SAFETY EYEWEAR

## Visors

BALBI2



VISOR HOLDER



EN166  
1 BT 3BT

PICO2



EN1731  
FF

VISOR TORIC

VISORPC

VISORG



EN166 EN1731



EN166 EN170  
1 AT 8.9 EV 2C-1.2

VISOR-HOLD MINI

VISORPC MINI

VISORG MINI



EN166 EN1731



GOLD VISOR




ON REQUEST

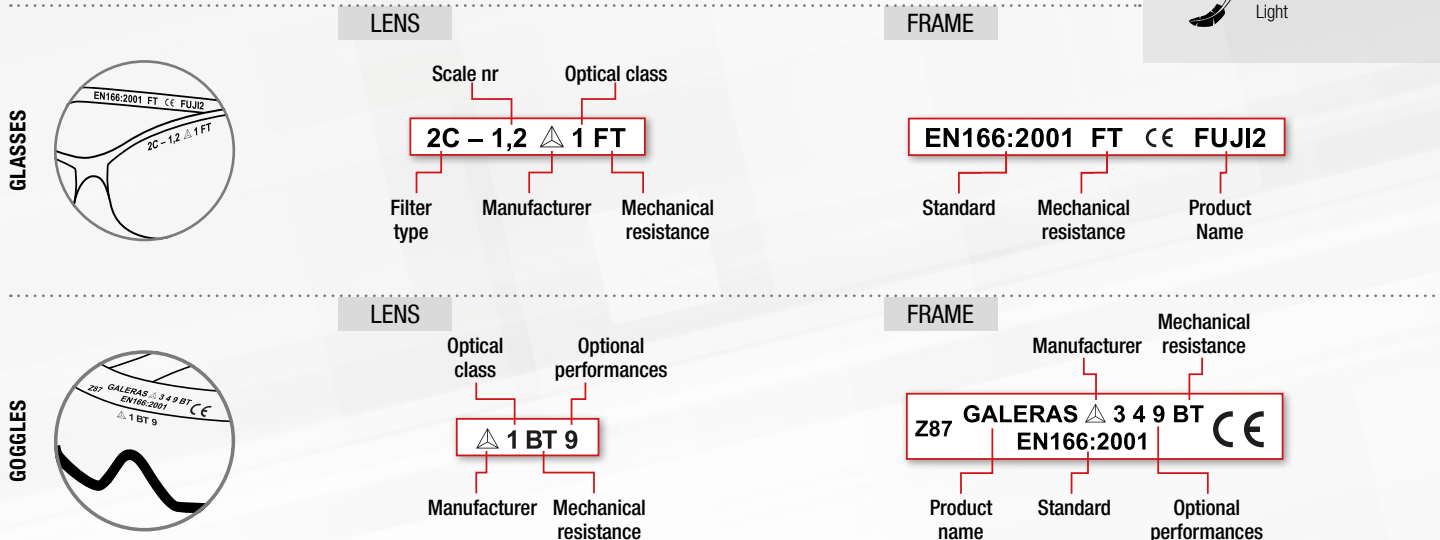
EN166 - EN1731



# SAFETY EYEWEAR

-  UV400
-  Anti-scratch
-  Anti-mist
-  Extra large vision
-  Chemical product resistance: acetate lens
-  Light

## SYMBOL MEANING - EN166



**1** optical class allowing permanent wear of the spectacles

### Mandatory performances

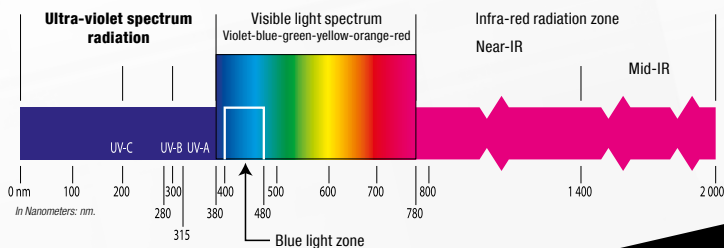
- S** Increased robustness: steel ball of 22 mm diameter at 5.1 m/s.
- F** Low energy impact: steel ball of 6 mm diameter at 45 m/s (maximal protection for glasses).
- B** Medium energy impact: steel ball of 6 mm diameter at 120 m/s (maximal protection for goggles).
- A** High energy impact: steel ball of 6 mm diameter at 190 m/s (maximal protection for visors).

### Optional performances

- 3** Liquid resistance (droplets or splashes).
- 4** Large dust particles resistance (size of > 5  $\mu$ m).
- 5** Gas and fine dust particles resistance (size < 5  $\mu$ m).
- 8** Short circuit electric arc resistance.
- 9** Resistance to splashes of molten metal and penetration of hot solids.
- T** (F - B - A): High speed particles at extreme temperatures - 5°C / + 55°C.
- N** Resistance to fogging of lenses.
- K** Resistance to surface damage by fine particles (anti-scratch).

## RISKS TO THE EYE FROM HARMFUL RADIATION

Zone	Wave Length	Environment	Eyesight damage
UV-C	100 - 280 nm	Industrial environment. Arc welding.	Cornea or crystalline lesions. Loss of eyesight.
UV-B	280 - 315 nm	Sunlight. Industrial environment. Black light tests.	Cataract. Welder flash. Arc flash.
UV-A	315 - 380 nm	Outdoor work.	Eye fatigue, partial blindness, cataract. Sunshine.



www.deltaplus.eu